



The Protocol on Specially Protected Areas and Wildlife in the Wider Caribbean (SPAW):

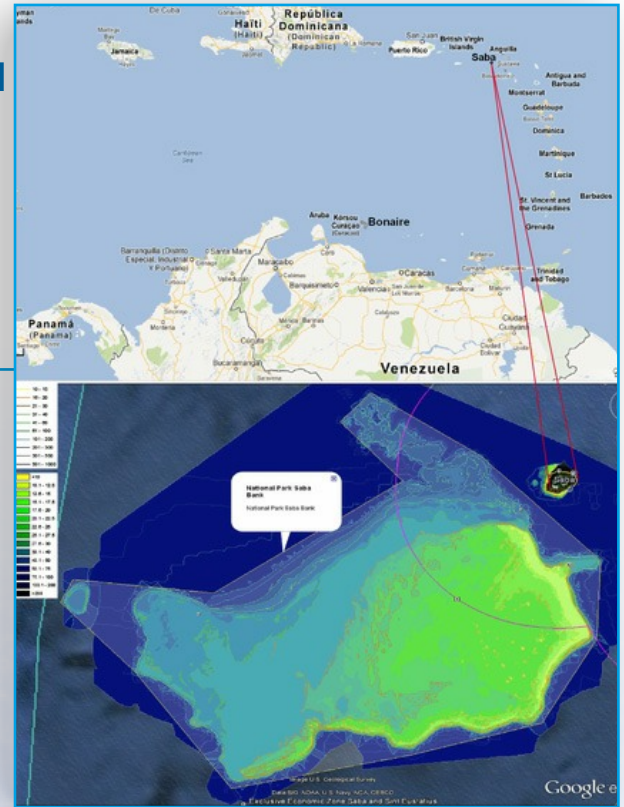
Saba Bank National Park

- A SPAW listed site -

Identification

Country: Netherlands
Name of the area: Saba Bank National Park
Administrative region: Saba
Date of establishment: 12/12/2010
Geographic location:
 Longitude X: -63.458586
 Latitude Y: 17.422422
Date of listing under SPAW: 23 October 2012

Contacts:
 Website: www.sabapark.org
 Email address: sabapark.manager@gmail.com
info@sabapark.org



Introduction

The Saba Bank National Park is a unique and highly significant area for the entire region. Biophysically it is a submerged atoll, the largest actively growing atoll in the Caribbean, and one of the largest atolls in the world, measuring 1,850 km² (above 50m depth contour). The area is significant in terms of its unique ecological, socio-economic, scientific and cultural characteristics. Its extensive coral reefs, fishing grounds and algae beds are very vulnerable to damage from international shipping, in particular anchoring of tankers and other cargo ships. Large ships also pose a hazard to the artisanal fishery practiced on the Saba Bank. In

addition some of the shallowest areas of the Saba Bank pose a hazard to navigation.

The area is extremely fragile to damage by international shipping (anchoring) and poses a risk to navigation and fishery in the area. Because of its rich biodiversity that needs protection and management, the Saba Bank was declared a protected area by the Dutch Government (15 Dec 2010) and an application to IMO has been submitted requesting for a PSSA status for the Bank, a decision is expected in 2013.

SPAW criteria met

Ecological criteria

- Representativeness
- Conservation value
- Rarity
- Naturalness
- Critical habitats
- Diversity
- Connectivity/coherence
- Resilience

Cultural and socio-economic criteria

- Productivity
- Cultural and traditional use
- Socio-economic benefits

Site description

General features of the site

Size: 2679 sq. km

Terrestrial surface under sovereignty, excluding wetlands:

0 sq. km

Wetland surface: 0 ha

Marine surface: 2679 sq. Km

National status of your protected area: National Act Nature Conservation Framework BES (Bonaire St. Eustatius and Saba).

Marine ecoregion: 64. Eastern Caribbean

Management structure, authority

Management falls under the responsibility of the Ministry of Economic Affairs, Agriculture and Innovation (EL&I) and has been mandated by the Ministry to the Saba Conservation Foundation (SCF), which has formed the Saba Bank Management Unit for this task.

Main fauna populations and/or those of particular importance present (resident or migratory) in the area:

A total of 33 coral species were documented on the Saba Bank in a rapid assessment of only 17 sites during the 2005 expedition. More species of coral remain to be found. Most species are rare, so an asymptotic curve indicates that most of the common species were collected. Undocumented coral species are likely to be found through more exhaustive sampling effort in coral dominated reef habitats, at remote sites, and in deeper depths.

Inhabitants inside the area or in the zone of potential direct impact on the protected area:

Inside the area: none

In the zone of potential direct impact: None

Management plan

The first Management Plan for the Saba Bank (SBMP) recognizes the value and uniqueness of the Bank and the need for a

strategic document to guide management decision making and to define the mission, goals and objectives of the Saba Bank Management Unit.

The SBMP was prepared in close consultation with a considerable number of stakeholders and stakeholder group representatives on Saba.

The SBMP specifies management goals and strategies for the Saba Bank Management Unit related to the Mission:

To conserve and manage the natural and economic resources within the Saba Bank National Park, allowing their sustainable use for the benefit of current and future generations.

It also identifies the major existing and potential threats and issues facing the Bank from ecological, social and cultural perspectives and includes substantial input from stakeholders.

It is designed to be an adaptive management tool. The SBMP fits within the broader context of the "Management Plan for the natural resources of the EEZ for the Dutch Caribbean" (EEZ Management Plan) which outlines the purposes and manner in which the Caribbean Exclusive Economic Zone and Saba Bank in particular may be used in a sustainable manner, based on a shared vision and common set of goals.

It outlines the management objectives, as well as key policies, and strategies with which to achieve sustainable management. It also addresses the administrative structure, resource use, financial support, key information needs, and action points most urgently required to set sustainable management in place.

International status and Date of designation

SPAW Site : 2012



Links

PA LISTING : www.spaw-palisting.org

CaMPAM : <http://campam.gcfi.org/campam.php>

UNEP-CEP : www.cep.unep.org/

SPAW-RAC : www.car-spaw-rac.org